



BIOTOOLS

BIOTOOLS B&M LABS.S.A.

Manufactured by:

BIOTOOLS B&M Labs, S.A.
Valle de Tobalina - 52 - Nave 39
28021 Madrid
Spain

Tel. 91 710 00 74
Fax 91 505 31 18
e-mail: info@biotools.eu
www.biotools.eu

BIOFOOD QL Kits

Kits for detection and identification of vertebrate species in food by Real-Time DNA Amplification

CHICKEN ID KIT

Equipment: Cepheid Smart Cycler

Cat. No. 91.906S

Instructions for Use

PLEASE READ THE INSTRUCTIONS FOR USE THOROUGHLY BEFORE USING THE KIT, ESPECIALLY IF YOU ARE NOT FAMILIAR WITH THE PROTOCOL

1. GENERAL INFORMATION

BIOFOOD kits allow the detection and, depending on the specific kit, the precise identification of a high number of animal species in fresh or processed food and feed samples. The detection method is based on the stability of nucleic acids, that endure the processes used in food industry (temperature, vacuum, drying, etc.). The kit has been tested with fresh and highly processed samples (including animal feed).

BIOFOOD QL CHICKEN ID Kit detects by Real-Time the presence or absence of *Gallus gallus* material. The method is based on the detection of species-specific DNA sequences from cytochrome b. DNA from *Gallus gallus* present in positive samples is amplified by primers (specific for cytochrome b). SYBR® Green binds to double-stranded PCR product formed during each amplification cycling and emits a fluorescence signal. The positivity of the sample to cytochrome b gene is confirmed via dissociation curve analysis (melting curve, T_m).

BIOFOOD QL CHICKEN ID Kit gives high sensitivity, the minimum material from *Gallus gallus* detected with the kit is 0.1%.

RESEARCH USE ONLY

Some of the applications which may be performed with this product may be in certain countries under an applicable patent. The purchase of this product does not include or provide a license to perform patented applications. Users may be required to obtain a license depending on the country and/or application. Biotools does not encourage the unlicensed use of patented applications.

PLEASE CHECK INTEGRITY OF KIT AND REAGENTS BEFORE USE. DETERIORATED KITS MAY CAUSE EQUIVOCAL RESULTS.

2. PRINCIPLE

DNA is obtained either from fresh or processed samples using an optimised method¹ (we recommend using Genomic DNA Extraction Kit - Cat. No. 21.002, 24 tests, or Cat. No. 21.003, 48 tests, available in our catalogue). Use of other methods is possible. However, user must confirm that the purified DNA can be used with the kit (concentration 50-100 ng/μl, A_{260/280}=1.8 – 2.0, absence of inhibitors that may affect the result of the amplification reaction, etc.). It is recommended to check the quality and suitability of the purified DNA for amplification reactions, e.g. performing control amplifications in parallel.

BIOFOOD QL CHICKEN ID kit is based on the amplification of a cytochrome b region from *Gallus gallus* and its direct detection by SYBR® Green. The kit can be used with heterogeneous samples (more than one component).

3. REAGENTS

Kit contains enough reagents in liquid format to perform 48 rxns (Cat. No. 91.906S). To minimize the risk of contamination and facilitate the use of the kit several times the Kit is presented in two set of 24 reactions. Sample Kit (Cat. No. 91.905S) contains one set of 24 reactions. Store all reagents at -15±8 °C (except diluted SYG solution which should be stored at 4 °C). Thaw and handle on ice. Do not freeze/thaw repeatedly. For frequent use, we recommend the aliquoting of the vial contents.

- **MASTER MIX** Two vials: 2 x 270 μl
 A Tris-HCl solution, containing <10 % glycerol, KCl, <0.001 % dATP, dCTP, dGTP, dTTP and primers. Master Mix includes all amplification reagents for the detection of cytochrome b from *Gallus gallus*, except MgCl₂ and DNA polymerase, in the adequate ratios.
- **MgCl₂ SOLUTION (50mM)** Two vials: 2 x 1.8 ml
 Mix well before use.
- **DNA POLYMERASE** Two vials: 2 x 30 μl
 Add to reaction mixtures shortly before introduction of vials in thermal cycler.
- **CHICKEN AMPLIFICATION CONTROL** Two vials: 2 x 40 μl
 Chicken positive control which consists of DNA amplified product from *Gallus gallus* at 10⁶ copies/μl.
- **SYG** Two vials: 2 x 0.35 μl
 A concentrated solution containing the intercalating dye SYBR Green I. **TO BE DILUTED WITH 500 μl OF SYG BUFFER. Avoid exposure to light.** Add diluted SYG solution to reaction vials shortly before introduction in thermal cycler. **Once diluted SYG vial should be stored at 4 °C.**
- **SYG BUFFER** Two vials: 2 x 600 μl
 For diluting concentrated SYG vial.

¹ Food and feed samples, due to their composition (additives, colourings, preservatives) have a high amount of components that may inhibit amplification reactions. Therefore, it is a must that the DNA purification method eliminate these inhibitors, keeping DNA integrity.

4. MATERIALS REQUIRED BUT NOT PROVIDED

NOTE

For all equipments, regular maintenance and calibration is necessary. Follow manufacturer's instructions, and check working parameters regularly, specially for thermal cyclers and pipettes. Maintenance and calibration of instruments allows its correct functioning, and helps detecting problems that may render an incorrect analysis result.

Pre-amplification area

- Equipment, reagents and disposable material necessary for DNA purification (depending on the method, follow manufacturer's instructions)
- Timer
- Automatic pipettes² (10, 20 and 200 µl), filter or positive displacement tips, RNase-free³
- Disposable examination gloves, powder-free
- Sterile bidistilled water
- Screw cap polypropylene tubes, 1.5 ml capacity, non siliconised, conical, sterile, RNase-free. It is recommended to use screw cap tubes, in order to avoid the potential contamination of samples and controls
- Racks for 1.5 ml vials
- Containers for disposal of potentially-infectious material
- Disposable filter paper for working surface, cleaning paper for accidental spills
- Termini-DNA-Tor⁴ or equivalent, in order to remove DNA from working surfaces

Amplification area

- Real-Time thermal cycler: Cepheid Smart Cycler. Use of this kit in other equipments has not been tested. For further information, contact our Technical Dpt. (info@biotools.eu)
- Laminar flow cabinet
- Racks for reaction vials
- Real -Time amplification vials (as per manufacturer's instructions)
- Sterile bidistilled water (Cat. No. 20.033 or equivalent)
- Automatic pipettes (10, 20 and 200 µl), filter or positive displacement tips, RNase-free
- Disposable examination gloves, powder-free
- Containers for disposal of potentially-infectious material
- Disposable filter paper for working surface, cleaning paper for accidental spills
- Termini-DNA-Tor or equivalent, in order to remove DNA from working surfaces

5. PROTOCOL

A PREPARATION OF REACTION MIXTURE AND SAMPLES

In order to obtain the best results, it is essential to keep the reaction vials refrigerated until their introduction in the thermal cycler. For standard conical vials introduce them on ice or on refrigerating blocks, being careful not to wet the optical cap. Use of reaction mixtures and vials in non-refrigerated conditions may cause a drastic decrease in sensitivity and quality of the obtained fluorescence curves.

1.- Dilute SYG vial as indicated in "Reagents Section".

2.- Final reaction volume is 25 µl. Calculate the necessary volume of Master Mix + SYG (diluted) + MgCl₂ + DNA polymerase to perform analysis of the samples and the controls. It is recommended to perform one (1) Positive Control and one (1) Negative Control in each analysis round (this must be taken into account for volume calculations).

NOTE

Before starting the procedure check that all reagents contain enough volume to perform the necessary reactions. Thaw all vials on ice and Keep them on ice while on use.

SYG vial must be protected from light. Its exposure to light may inactivate it and affect the performance of the kit dramatically.

² Precision of automatic pipettes must be in the range of 3 % of the indicated volume. If necessary, calibrate and check regularly, following manufacturer's instructions. It is recommended to use RNase-free filter tips and positive displacement tips, in order to avoid cross contamination between samples and amplicons.

³ It is recommended to use different sets of pipettes for each reaction step (pre-amplification, amplification), in order to avoid contaminations that may render false positive results.

⁴ Available in Biotools' catalogue (Cat. No. 22.001).

3.- Mix the required volume of each reagent in a 1.5 ml vial, according to the number of reactions to be performed. **Perform this process in a laminar flow cabinet.** Keep the reaction mixture (reaction mixture = Master Mix + SYG diluted + MgCl₂ + DNA Polymerase + sterile bidistilled water) on ice. **Protect SYG vial from light at all times.**

Reagent	1 Reaction
Master Mix	10 µl
SYG (diluted)	0.4 µl
DNA Polymerase	0.5 µl
MgCl ₂	1 µl
Sterile bidistilled H ₂ O	10,6 µl

To ensure sufficient volume for all reactions prepare reaction mixture for n + 1

4.- Aliquot 22,5 µl of reaction mixture in each amplification vial⁵.

5.- Remove tubes from the laminar flow cabinet. **Addition of DNA to reaction mixtures should be performed in the pre-amplification area in order to avoid contaminations (never introduce DNA in the laminar flow cabinet).** Add 2, 5 µl of DNA purified from samples (sample DNA concentration 20 ng/µl) and/or controls (Chicken Amplification Control) to each amplification vial. For samples where DNA cannot be quantified it is recommended to standardise a fixed volume to add (1-5 µl) and complete up to 25 µl final volume with sterile bidistilled water.

NOTE

Amplification must be started in the next 10 minutes after adding the purified DNA and controls to the amplification mix.

6.- Close amplification vials. When using optical caps, be careful not to leave traces of powder, dust, etc. Place vials in thermal cycler. Store remaining of all reagents at the indicated temperatures.

B PROGRAMMING THE CEPHEID SMARTCYCLER®

NOTE

Check thermal cycler regularly. Non-existent or poor calibration of the equipment may render equivocal results.

Turn the Smart Cycler processing block on and ensure that it is properly connected to the computer. For information on the installation of software and instrumentation setup, please consult the operator's manual.

Double-click the Smart Cycler icon on the Desktop.

Define Protocols

a) Click the "Define Protocols" icon.



b) Click the **New Protocol** button at the bottom-left. A dialogue box will appear in which you enter a unique name for the protocol.

c) In the Stage 1 window, follow the instructions and diagram below:
 i- Chose Hold from the drop-down window.
 ii- Enter temperature and time parameters.
 iii- Ensure that optics is switched off.

⁵ Amplification vials will be that specifically recommended by each Real-Time thermal cycler.

Stage 1		
Hold ▼		
Temp	Secs	Optics
94.0	90	Off

- d) In the Stage 2 window, follow the instructions and diagram below:
- Chose 3-Temperature Cycle from the drop-down window.
 - Enter 30 repeats for the cycle.
 - Enter temperature and time parameters as shown.
 - Ensure that optics are switched off for all steps except at 72° C.
 - Leave the “Advance to next Stage” window blank.

Stage 2			
Repeat		30	times.
3-Temperature Cycle ▼			
Deg/Sec	Temp	Secs	Optics
NA	95.0	10	Off
NA	62.0	30	Off
NA	72.0	40	On
<input type="checkbox"/> Advance to Next Stage			

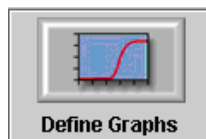
- e) In the Stage 3 window drop-down list, chose “Melt Curve”. Enter temperature and time parameters as shown in the following figure and table below.
- Chose Melt Curve from the drop-down window
 - Enter temperature and time parameters as shown.
 - Ensure that optics is selected for Ch1.
 - The temperature Ramp Rate should be entered as below.

Stage 3			
Melt Curve ▼			
Start	End	Optics	Deg/Sec
60.0	95.0	Ch1	0.5

- f) Click the “Save Protocol” Button

Define Graph

- a) Click the “Define Graphs” icon.



- b)
- Select “New Graph” button.
 - Enter a unique name in the dialogue box and click OK.
 - Chose Optics from the “Graph Type” drop-down list.
 - Select only Ch1 from the channels box.
 - Select Primary Curve, and Threshold from the Show box.
 - Select Fluorescence vs. Cycle from the Axes box.
 - Check the “Automatically added to new Runs” box.
 - click “Save Graph” box.

Automatically added to new Runs

Graph Type: **Optics**

Channel(s):



Ch 1
 Ch 2
 Ch 3
 Ch 4

Show:

Primary Curve
 2nd Derivative
 Threshold (Horizontal)
 Threshold Crossings (Vertical)

Axes:

Fluorescence vs. Cycle
 Log Fluorescence vs. Cycle



- c)
- i- Select  "New Graph" button.
 - ii- Enter a unique name in the dialogue box and click OK.
 - iii- Chose Temperature from the "Graph Type" drop-down list.
 - iv- Select Sample Temperature from the Show box.
 - v- Check the "Automatically added to new Runs" box.
 - vi- click  "Save Graph" box.

Automatically added to new Runs

Graph Type: **Temperature**

Show:

Sample Temperature
 Heater Temperature
 Target Temperature

- d)
- i- Select  "New Graph" button.
 - ii- Enter a unique name in the dialogue box and click OK.
 - iii- Chose Melt from the "Graph Type" drop-down list.
 - iv- Select Melt Curve, 1st Derivative, and Melt Temperature in the Show box.
 - v- Check the "Automatically added to new Runs" box.
 - vi- click  "Save Graph" box.

Automatically added to new Runs

Graph Type: **Melt**

Show:

Melt Curve
 1st Derivative
 Melt Temperature

Create Run

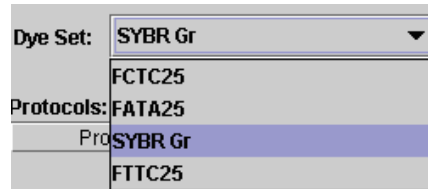
- a) Click the "Create Run" icon.



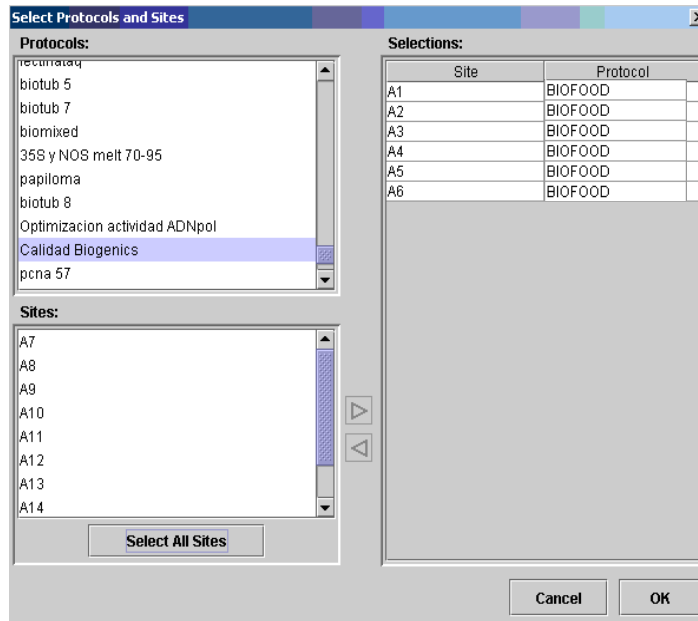
Follow the instructions and figures below:

b) Enter a unique Run Name.

c) In the “Dye Set” drop-down list, chose “ SyG EtBr” for Smart Cyclers, or “SYBR Gr” for the Smart Cyclers II instrument.



d) Click the “Add/Remove Sites” button to open the “Select Protocols and Sites” dialogue box shown below.



i-Select the protocol created in the “Define Protocols” section and the sites in which samples are to be analysed. Move selections to “Selections” box with the right arrow.
 ii-click “OK”

e) In the window shown below, sample IDs, sample types (STD, UNKN, or UNUSED), and concentrations can be entered.

Site ID	Protocol	Sample ID	Sample Type	Notes	FAM Std Conc	Cy3 Std Conc	TxR Std Conc
A1	BIOFOOD		STD	neg cntrl	0.00	0.00	0.00
A2	BIOFOOD		STD	500 copies	500.00	0.00	0.00
A3	BIOFOOD		STD	5000 copies	5000.00	0.00	0.00
A4	BIOFOOD		STD	50000 copies	50000.00	0.00	0.00
A5	BIOFOOD		UNKN	sample A			
A6	BIOFOOD		UNKN	sample B			

f) Select the “Start Run” button.

Summary Table of BIOFOOD QL CHICKEN ID Programme

Hold			
Temperature	Time (sc)	Ramp Rate	Optics
94 ° C	90	NA	Off
Amplification: 30 cycles			
Temperature	Time (sc)	Ramp Rate	Optics
95° C	10	NA	Off
62° C	30	NA	Off
72° C	40	NA	On
Melt Curve			
Temperature	Fluorescence	Ramp Rate (Deg/Sec)	
Start	60° C	Ch1	0.5
End	95° C		

6. INTERPRETATION OF RESULTS

Use of thermal cyclers with coupled fluorescence capture systems allows the monitoring in Real-Time and in each amplification cycle of the generated amplification products. Interpretation of results will be based on the specific software for the used equipment, following the manufacturer's instructions and recommendations.

Fluorescence curves

Real-Time amplification systems will render fluorescence increase curves depending on the amplification cycle. Thus, positive samples will render an increasing fluorescence curve. Cycle where fluorescence increase starts is proportional to the quantity of target material present in the sample. On the contrary, negative samples will not render a fluorescence increase during the process, rendering a basal fluorescence line.

The interpretation of results is performed based on the melting curve analysis:

1. There should not be melting curves for Negative Controls (Amplification and DNA purification blanks).
2. If a sample contains chicken (*Gallus gallus*) DNA material a melting peak should appear at the same temperature of the chicken positive control included in the Kit 88-89 °C.
3. If turkey (*Melagris gallopavo*) is present on the sample a melting peak will also appear at 86-87.5 °C.

NOTE

The melting temperature may vary depending on the employed instrument. The presence of inhibitors in the DNA extracted from the sample may cause variations in the expected melting values.

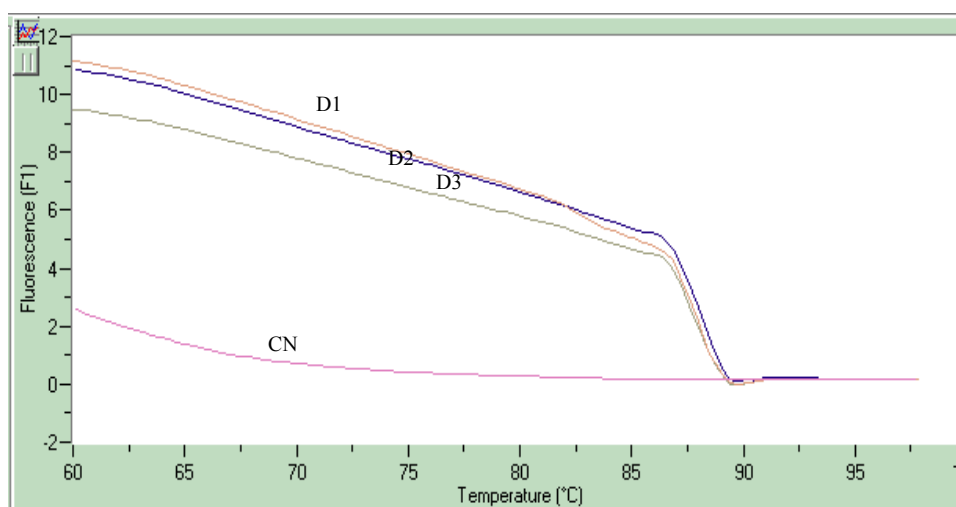


Figure 1. Melting curve obtained using a Positive Control containing 20 ng/μl of DNA from *Gallus gallus*. Sample D1- 1:100 dilution; Sample D2- 1:500 dilution; Sample D3- 1:1000 dilution; Sample CN. Negative Control (Double distilled water).

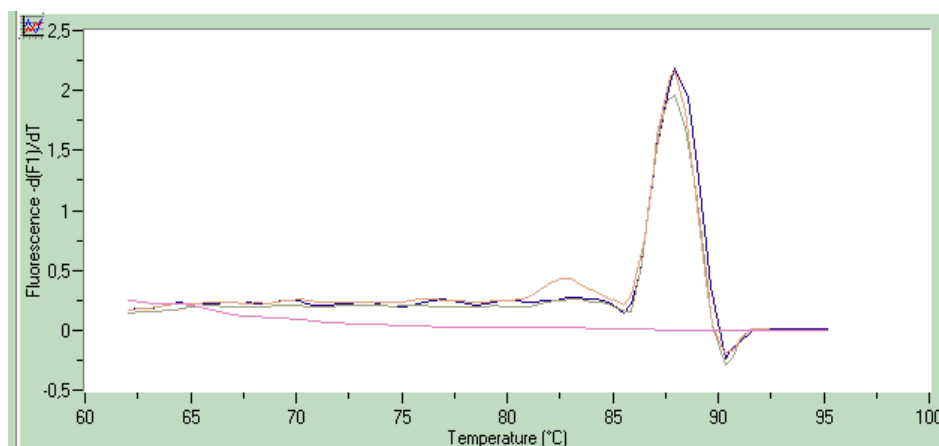


Figure 2. T_m analysis of the experiment shown in figure 1. A peak at 88 °C can be observed, there is a decrease in the fluorescence levels for samples with higher dilutions.

NOTE

It must be considered that the test detects DNA, not protein or percentage of target material. The concentration of DNA is not always correlated with the percentage of target material, specially in processed samples, or materials containing trace amounts of DNA (e.g. bone, fat).

7. QUALITY CONTROL

It is recommended that at least one (1) Positive Control and one (1) Negative Control be run each time the test is performed. As with any new laboratory procedure, novel users should consider performing additional controls (both positive and negative) until a high degree of confidence is reached.

The Positive Controls must render the corresponding peaks in the Melting Analysis (see 'Interpretation of Results' chapter). Vials containing negative control (sterile bidistilled water) must render no peaks. Any analysis not fulfilling any of these results must be completely invalidated and discarded. It is necessary to repeat the process from its beginning, including DNA purification, processing other aliquot of the original sample. A failure of instruments during the test, indicated by error messages, also means that the test has not been valid. Repeat all the procedure for each sample from the amplification step.

8. PROCEDURAL PRECAUTIONS

1. Laboratory workflow must be unidirectional, from pre-amplification area to amplification area. Pre-amplification tasks must be initiated with the preparation of the reagents and sample purification. Equipments, materials and reagents must be dedicated and they must not be used for other activities or be transferred from one to another area. Gloves must be worn in each area, and must be discarded before proceeding to the next area. Equipments and materials used for setting-up of reactions must not be used for other activities, or for pipetting or processing amplified DNA or other DNA sources.
2. As with any analytical procedure, it is fundamental to use a good laboratory practice to obtain good results with this technique. Due to the high analytical sensitivity of the test, extreme care must be taken in order to keep the purity of all kit reagents and all reaction mixtures. All reagents must be carefully checked in order to ascertain their purity. Discard all suspect reagents.
3. Instructions must be followed in order to obtain correct results. Should the user have any questions, please contact our Technical Dpt. (info@biotools.eu).
4. This test has been validated for use with the reagents provided by the kit. The use of other amplification methods, or the use of equipment not fulfilling the specifications, may render equivocal results. User is responsible for validating the modifications for this test, in any of the indicated parameters.
5. Use powder-free examination gloves while handling reagents or samples, as well as lab coat. Wash hands thoroughly after performing the test.
6. Open and close reagent vials carefully. Observe temperature and light exposure instructions. After use, close vials and store at indicated temperatures.
7. Do not use product after expiry or best before date.
8. Kit components have been tested as a whole. **Do not interchange components** with other kits, or components from different lots.

9. Nucleic acids are very sensitive to degradation by nucleases. Nucleases are present in human skin and surfaces that have been in contact with humans. Wash with Termi-DNA-Tor and cover working surfaces with suitable paper. Use powder-free examination gloves throughout the whole process.
10. Extreme care must be taken when aliquoting the different volumes in each reaction step. Mix well after addition of each reagent, unless otherwise noted. Read instructions for use of automatic pipettes.
11. Do not pipette by mouth.
12. Packaging material included with the kit is resistant to the indicated storage conditions. Storage at different conditions can cause breakage of the material, and possible contamination of kit contents.
13. Plastic material included with the kit is resistant in the normal conditions of use. Use of plastic material in extreme conditions may cause its breakage, and therefore, impossibility to use the kit.
14. False negative results may be obtained due to polymerase inhibition. It is recommended to perform control reactions to distinguish between inhibition and true negatives.
15. Cross contamination between samples and exogenous DNA can only be avoided by following good laboratory practice. Instructions in this document must be strictly followed.
16. Use of this product is limited to qualified professional personnel, experienced in DNA purification and DNA amplification techniques.
17. It is important to pipet the indicated amounts, and mix well after each reagent addition. Check pipettes regularly.
18. Biotoools laboratories participate in a regular and satisfactory way in intercomparison studies (ring tests) recognised internationally (USDA-GIPSA, GeMMA Scheme, FAPAS & FEPAS etc.). On the other hand, Biotoools is an active member of different standardization and regulation committees (AENOR, CEN).

9. WARRANTY

Products are guaranteed to conform to the quality and content indicated on each vial and external labels during their shelf life. BIOTOOLS obligation and purchaser's rights under this warranty are limited to the replacement by BIOTOOLS of any product that is shown defective in fabrication, and that must be returned to BIOTOOLS, freight prepaid, or at BIOTOOLS' option, replacement of the purchasing price. Any complaint on damaged goods during transport must be directed to the handling or transport agent.

Product for Research Use Only. This product must be used by qualified professionals only. It is the responsibility of the user to ascertain that a given product is adequate for a given application. Any product not fulfilling the specifications included in the product sheet will be replaced. This warranty limits our responsibility to the replacement of the product. No other warranties, of any kind, express or implied, including, without limitation, implicit warranties of commercialisation ability or adequacy for a given purpose, are provided by BIOTOOLS. BIOTOOLS will not be held responsible for any direct, indirect, consequential or incidental damage resulting of the use, misuses, results of the use or inability to use any product.

Manufactured by:

BIOTOOLS, Biotechnological & Medical Laboratories, S.A. has been evaluated and certified to accomplish ISO 9001:2000 requirements for the following activities: Research and development of biotechnology products and manufacture of biotechnology and in vitro products.
Valle de Tobalina – 52 – Nave 39, 28021 Madrid – Spain

BIOTOOLS® is a registered mark of BIOTOOLS, Biotechnological & Medical Laboratories, S.A.
Termini-DNA-Tor™ is a trademark of BIOTOOLS, Biotechnological & Medical Laboratories, S.A.
Genomic DNA extraction™ Kit is a trademark of BIOTOOLS, Biotechnological & Medical Laboratories, S.A.

SYBR® Green is a registered trademark of Molecular Probes Inc.
Smart Cycler® is a registered trademark of Cepheid



© 2007 BIOTOOLS, Biotechnological & Medical Laboratories, S.A. All rights reserved